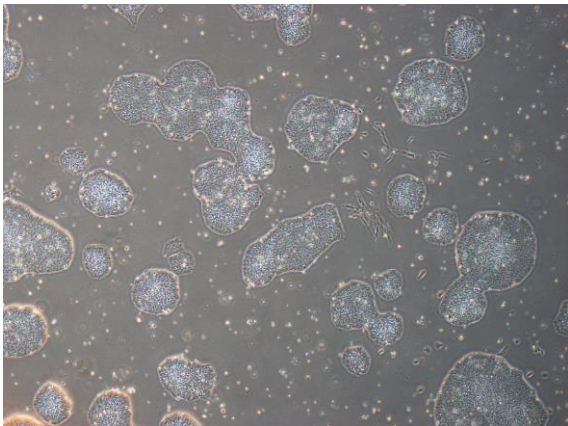
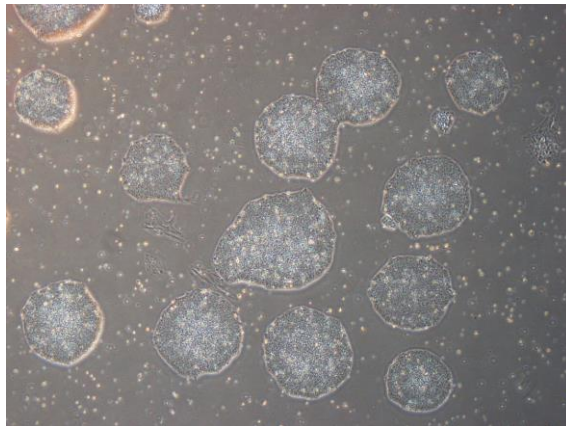


【 CiRA-j-1288 】 Morphology of iPSC colonies

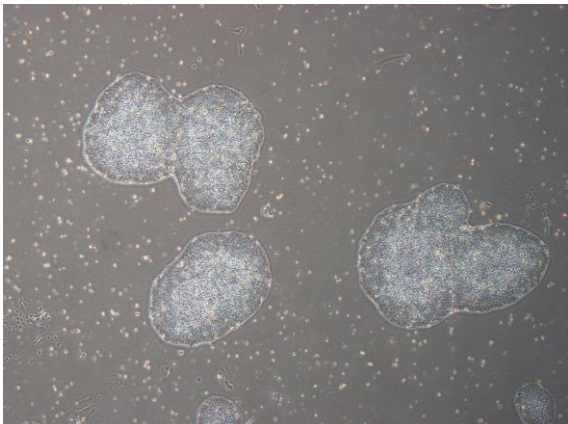
CiRA-j-1288-A: passage-3



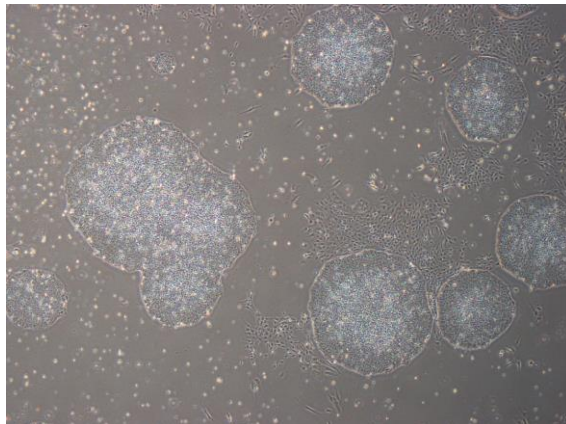
CiRA-j-1288-B: passage-3



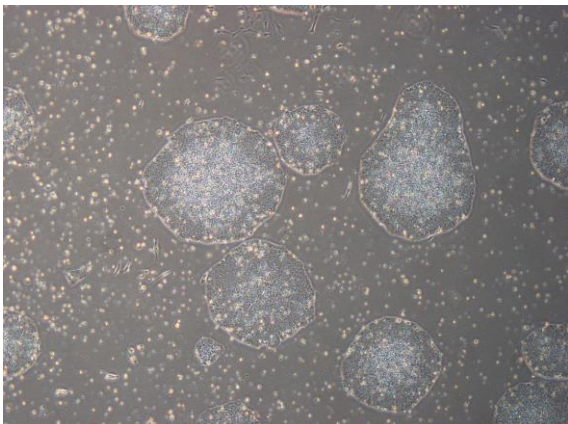
CiRA-j-1288-C: passage-3



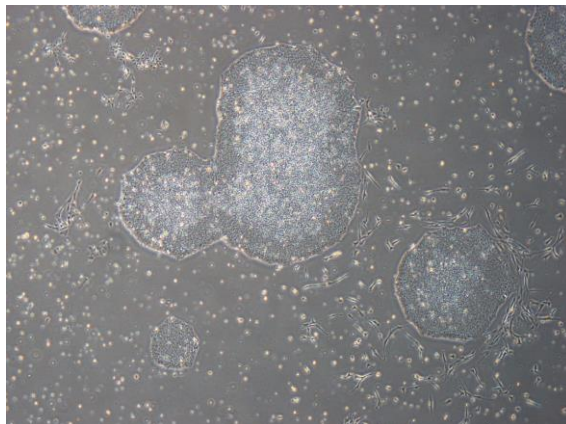
CiRA-j-1288-D: passage-3



CiRA-j-1288-E: passage-3



CiRA-j-1288-F: passage-3



(All images were captured at 4x magnification)